 <p>Agreement on the Conservation of Albatrosses and Petrels</p>	<p style="text-align: center;">Joint Twelfth Meeting of the Seabird Bycatch Working Group and Eighth Meeting of the Population and Conservation Status Working Group</p> <p style="text-align: right;"><i>Lima, Peru, 8 August 2024</i></p> <p style="text-align: center;">Habitat preferences of <i>Phoebetria</i> albatrosses in sympatry and allopatry</p> <p style="text-align: center;"><i>Lily K. Bentley, Richard A. Phillips, Tegan Carpenter- Kling, Rob J.M. Crawford, Richard J., Cuthbert, Karine Delord, Ben J. Dilley, Azwianewi B. Makhado, Peter I. Miller, Steffen Oppel, Pierre Pistorius, Peter G. Ryan, Stefan Schoombie, Henri Weimerskirch and Andrea Manica</i></p>
---	---

Attachment: Bentley, L.K., Phillips, R.A., Carpenter-Kling, T., Crawford, R.J.M., Cuthbert, R.J., Delord, K., Dilley, B.J., Makhado, A.B., Miller, P.I., Oppel, S., Pistorius, P., Ryan, P.G., Schoombie, S., Weimerskirch, H. and Manica, A. in press. Habitat preferences of *Phoebetria* albatrosses in sympatry and allopatry. *Journal of Biogeography*.
<https://doi.org/10.1111/jbi.14966>

SUMMARY

Aim: Competition is often proposed to drive niche segregation along multiple axes in speciose communities. Understanding spatial partitioning of foraging areas is particularly important in species that are constrained to a central place. We present a natural experiment examining variation in habitat preferences of congeneric Southern Ocean predators in sympatry and allopatry. Our aim was to ascertain consistency of habitat preferences within species, and to test whether preferences changed in the presence of the congener. Location: Southern Hemisphere. Taxon: Multiple colonies of both species within the genus *Phoebetria* (sooty albatrosses). Methods: The two *Phoebetria* albatrosses breed on islands located from ~37–55°S – sooty albatrosses (*P. fusca*) in the north and light-mantled albatrosses (*P. palpebrata*) in the south – with sympatric overlap at locations ~46–49°S. We analysed GPS and PTT tracks from 87 individuals and multiple remotely sensed environmental variables using GAMs, to determine and compare the key factors influencing habitat preference for each species at each breeding colony. Results: While foraging habitat preferences are consistent in light-mantled albatrosses, there is divergence of preferences in sooty albatrosses depending on whether they are in sympatry with their congener or in allopatry. Main Conclusions: This study represents the most comprehensive work on this genus to date and highlights how habitat preferences and behavioural plasticity may influence species distributions under different competitive conditions.



Habitat preferences of *Phoebetria* albatrosses in sympatry and allopatry

Lily K. Bentley^{1,2} | Richard A. Phillips² | Tegan Carpenter-Kling³ |
Robert J. M. Crawford⁴ | Richard J. Cuthbert^{5,6} | Karine Delord⁷ | Ben J. Dilley⁸ |
Azwanewi B. Makhado^{4,8} | Peter I. Miller⁹ | Steffen Oppel⁶ | Pierre A. Pistorius³ |
Peter G. Ryan⁸ | Stefan Schoombie⁸ | Henri Weimerskirch⁷ | Andrea Manica¹

¹Department of Zoology, University of Cambridge, Cambridge, UK

²British Antarctic Survey, Natural Environment Research Council, Cambridge, UK

³Marine Apex Predator Research Unit (MAPRU), Department of Zoology, Institute for Coastal and Marine Research, Nelson Mandela University, Port Elizabeth, South Africa

⁴Oceans and Coasts, Department of Forestry, Fisheries and the Environment, Cape Town, South Africa

⁵World Land Trust, Suffolk, UK

⁶RSPB Centre for Conservation Science, Royal Society for the Protection of Birds, Sandy, UK

⁷Centre d'Etudes Biologiques de Chizé CNRS, UMR 7372 CNRS- La Rochelle Université, Villiers en Bois, France

⁸FitzPatrick Institute of African Ornithology, University of Cape Town, Rondebosch, South Africa

⁹Plymouth Marine Laboratory, Plymouth, UK

Correspondence

Lily K. Bentley, Centre for Biodiversity and Conservation Science, School of the Environment, University of Queensland, St Lucia, Australia.

Email: l.bentley@uq.edu.au

Funding information

Natural Environment Research Council; Gates Cambridge Trust; Prince Albert II of Monaco Foundation; Institut Polaire Français Paul Emile Victor; South African National Antarctic Programme, Grant/Award Number: SNA093071

Abstract

Aim: Competition is often proposed to drive niche segregation along multiple axes in speciose communities. Understanding spatial partitioning of foraging areas is particularly important in species that are constrained to a central place. We present a natural experiment examining variation in habitat preferences of congeneric Southern Ocean predators in sympatry and allopatry. Our aim was to ascertain consistency of habitat preferences within species, and to test whether preferences changed in the presence of the congener.

Location: Southern Hemisphere.

Taxon: Multiple colonies of both species within the genus *Phoebetria* (sooty albatrosses).

Methods: The two *Phoebetria* albatrosses breed on islands located from ~37–55°S – sooty albatrosses (*P. fusca*) in the north and light-mantled albatrosses (*P. palpebrata*) in the south – with sympatric overlap at locations ~46–49°S. We analysed GPS and PTT tracks from 87 individuals and multiple remotely sensed environmental variables using GAMs, to determine and compare the key factors influencing habitat preference for each species at each breeding colony.

Results: While foraging habitat preferences are consistent in light-mantled albatrosses, there is divergence of preferences in sooty albatrosses depending on whether they are in sympatry with their congener or in allopatry.

Main Conclusions: This study represents the most comprehensive work on this genus to date and highlights how habitat preferences and behavioural plasticity may influence species distributions under different competitive conditions.

KEYWORDS

albatross, antarctica, biologging, coevolution, competition, marine predators, satellite telemetry, seabirds, Southern Ocean

This is an open access article under the terms of the [Creative Commons Attribution](https://creativecommons.org/licenses/by/4.0/) License, which permits use, distribution and reproduction in any medium, provided the original work is properly cited.

© 2024 The Author(s). *Journal of Biogeography* published by John Wiley & Sons Ltd.

1 | INTRODUCTION

Interspecific competition occurs when species overlap in space and share the same habitats and resources, and can be particularly pronounced in closely related taxa (MacArthur & Levins, 1964; Svårdson, 1949; Tilman, 2007). Responses to interspecific competition vary, but include agonistic or territorial behaviour if species remain specialised on the same resources, or niche differentiation if either selection or plasticity results in one or both species shifting to alternative resources (Grant & Grant, 2006; Kokkoris et al., 1999; Stuart & Losos, 2013; Tarjuelo et al., 2017). The latter has been observed, for example, in hydrological niches in plants (Araya et al., 2011), feeding niches in predatory fish (Young et al., 2010), microhabitat use in reptiles (Pianka & Huey, 1978), and sensory abilities in bats (Siemers & Schnitzler, 2004). Segregation along multiple axes relating to habitat use, phenology, or trophic level has also been reported in speciose communities across diverse taxa (Croxall & Prince, 1980; Ito et al., 2021; Kiszka et al., 2011). Habitat segregation of mobile predators is well-studied in terrestrial and marine systems as an adaptive response to interspecific competition, which allows for competitors to coexist (Jankowski et al., 2010; Martin & Martin, 2001; Morris, 2003; Ziv et al., 1993).

For highly mobile species, foraging habitat selection is of critical importance, particularly when the environment is dynamic and prey are unpredictable at small spatial scales (Weimerskirch, 2007). Whether we consider the drivers of habitat selection at the proximate level (the environmental cues used to locate prey patches) or ultimate level (the evolutionary costs and benefits of using a particular habitat), it is assumed that individuals should forage such that their expected fitness is maximised (Hutto, 1985; Pyke, 1984). It has been suggested as a general rule that competitors with similar ecological niches are more confined to their specific, divergent niches when in sympatry, but expand into the niche of their absent competitor when in allopatry (Hildén, 1965). While often argued that niche divergence between competitors is evidence of competition driving coevolution (e.g. Cloyd, 2014; Jones & Barmuta, 2000; Salewski et al., 2003), demonstrating the supposed coevolutionary shaping of niches is difficult, particularly as there are other potential drivers (Connell, 1980). When studying an ecological community, it is often impossible to tell whether observed traits are truly coevolved – that is, that they represent reciprocal evolutionary change in traits between two co-occurring species (Janzen, 1980) – or instead are adaptations over shorter timescales (Connell, 1980, 1985). If habitat preferences have coevolved at a species level due to historical competition, they are likely to be less variable than those that emerged within populations due to behavioural plasticity or density-dependent mechanisms.

Seabirds are a good model to study effects of competition on habitat preference, because they breed in densely populated communities with highly constrained central-place foraging (Antolos et al., 2017; Phillips et al., 2017). As well as limitations in transit time, the high levels of intra- and interspecific competition associated with high densities of other animals foraging from the same central place leads to local

prey depletion (Ashmole, 1963; Weber et al., 2021). This forced overlap during an energetically expensive life stage has led to segregation across multiple axes, both within and between species, as animals trade-off competing demands on their time and the costs and benefits of habitat specialisation (Bolton et al., 2019; Campioni et al., 2016; Cooper & Klages, 1995; Granroth-Wilding & Phillips, 2019; Navarro et al., 2013; Reisinger et al., 2020). However, almost all studies to date have focused on competition within a single breeding community, thus making it difficult to ascertain the drivers of observed niche differentiation at a broader level. A suitable study system to investigate the impact of competition on habitat preference exists in the *Phoebastria* albatrosses (sooty albatross *P. fusca* and light-mantled albatross *P. palpebrata*). This genus has a circumpolar distribution, and the two species breed both in sympatry and allopatry. Sooty albatrosses breed north of the Antarctic Polar Front (37–49°S), whereas light-mantled albatrosses breed in the subantarctic region (46–55°S); the species co-occur at their respective southern/northern limit, at the Prince Edward Islands and Iles Crozet (~46°S) (Berruti, 1979; Phillips et al., 2016; Schoombie et al., 2017). There is extensive overlap of the ~7 months of breeding seasons in both species, although on average sooty albatrosses lay ~2 weeks earlier than light-mantled albatrosses (Tickell, 2000). This allochrony means that there is little overlap of the ~3-week brood-guard stage, but significant overlap of the longer incubation and chick-rearing periods.

In this study, we compare the foraging habitat preferences of the *Phoebastria* albatrosses at multiple colonies across their breeding ranges, including in sympatry and allopatry (Figure 1). Our aim was to ascertain consistency in these habitat preferences within species and to test whether preferences changed in the presence of the congener. We hypothesised that if foraging habitat preference coevolved in sympatry or was otherwise innate, we would observe consistent preferences within both species across breeding sites. The alternative is that habitat preferences are shaped on shorter timescales by interspecific competition, in which case we hypothesised that colony-specific preferences would be apparent in one or both species. Understanding the habitat selection of these highly mobile predators is important not only to answer these ecological questions, but also to identify key areas for conservation and management interventions.

2 | MATERIALS AND METHODS

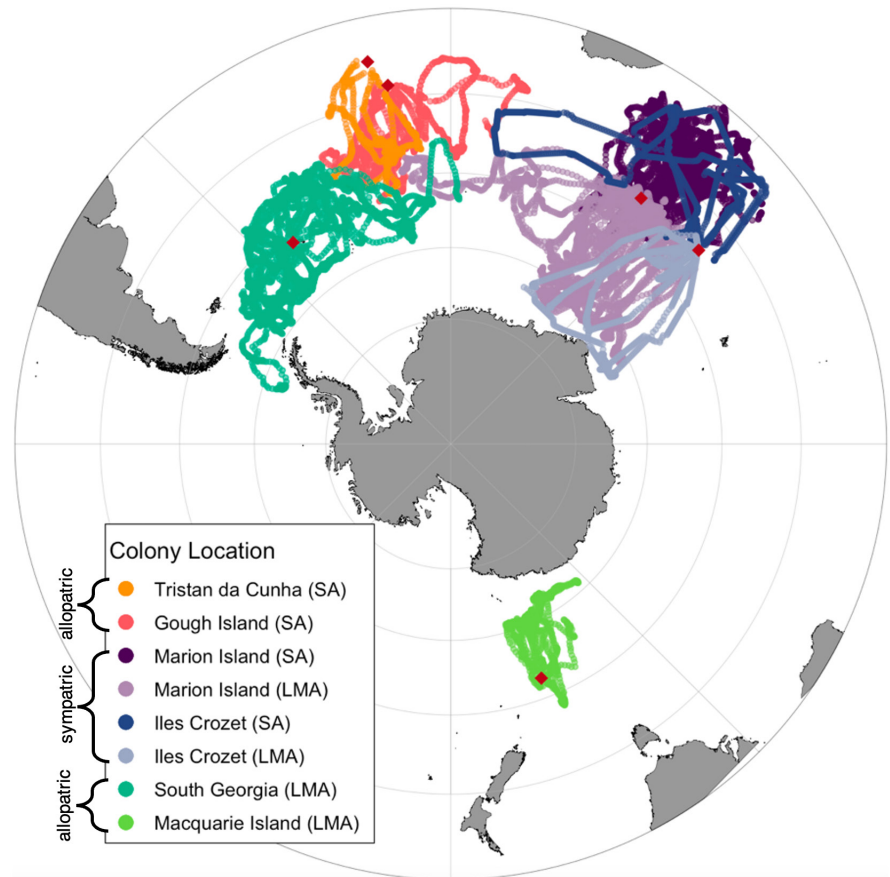
2.1 | Data collection

Light-mantled and sooty albatrosses were tracked during the breeding season at multiple islands from the years 2002 to 2017 (for full details, see Table 1).

2.2 | Track processing

Tracks were visually inspected and removed from analysis if they were incomplete due to device malfunction or early battery

FIGURE 1 Tracks of foraging trips from light-mantled albatrosses (LMA) and sooty albatrosses (SA) during incubation from multiple colonies across their breeding range. Study colonies indicated by red diamonds. For deployment details, see [Table 1](#).



failure. Trips were counted as incomplete if fixes were missing for extended periods during the trip or were missing such that it was impossible to estimate the times of departure and return to the colony. Trips were taken during incubation (or chick-rearing at Iles Crozet only). Where multiple trips for the same individual were successfully recorded, only the first trip was selected from each bird to avoid pseudo-replication. The first trip, rather than a random trip, was selected for birds tracked for multiple trips to be consistent with the first, and only trip recorded for the remainder of the sample. All tracks were filtered (*trip* R package [Sumner et al., 2009]) to remove points indicating biologically implausible flight speeds >90 km/h (Phillips et al., 2007), and interpolated to 60-min intervals for consistency, as this was the coarsest temporal resolution of data collected. Interpolating locations at regular intervals ensures that bias is not introduced by comparing data with different temporal resolutions. Given that foraging trips of *Phoebastria* albatrosses last for over a week, hourly points were considered sufficient to capture movement patterns at an appropriate spatiotemporal scale. Characteristics (duration, distance travelled, and maximum displacement) were calculated from the interpolated tracks. In order to determine habitat preferences from presence-only data from tracked seabirds, it is necessary to generate pseudoabsences that represent the available environment within the foraging range. For each track, 20 pseudoabsence tracks were generated by randomising the departure direction from the colony, while retaining step length and turning angle

to ensure flight patterns were biologically appropriate (Bentley et al., 2023). Various remote sensing and other environmental variables known for their importance in habitat selection for Southern Ocean predators (Reisinger et al., 2018) were extracted for each presence and pseudoabsence location ([Table 2](#)).

2.3 | Modelling

Binomial generalised additive models (GAMs) using the environmental variables extracted at the presence and pseudoabsence locations were constructed for each species. Additive models are appropriate when relationships with predictors are likely to be non-linear and were constructed using the R package 'mgcv' (Wood, 2011). GAMs generate smooth terms that are simple to interpret, even when dealing with multiple variables, and are robust to overfitting. Full models were constructed for each species, using all environmental variables (see [Table 2](#)) by colony type (sympatric or allopatric), and model selection was undertaken using AICc values. Models for each colony were subsequently constructed using the environmental variables selected for the full model. Spatial autocorrelation was accounted for in all cases using a Gaussian correlation structure on the latitude and longitude terms. All model formulae and outputs are available in [Supplementary Tables 1–6](#). All data manipulation and analyses were undertaken in R version 4.0.3 (R Core Team, 2020). Means are provided \pm SD unless indicated otherwise.

TABLE 1 Summary of tracking data from light-mantled albatrosses (LMA) and sooty albatrosses (SA) used in analyses. 'Year' refers to the timing of egg laying, although incubation/chick rearing at some colonies extends into January the following year. Population sizes from ACAP (2010a, 2010b), except for Marion Island SA (Schoombie et al., 2016), and LMA/SA from Iles Crozet (Weimerskirch et al., 2018).

Site name	Latitude, longitude	Species	Est. population (breeding pairs)	% of global population	Sympatric/allopatric	Year(s)	Device	Further information
Tristan da Cunha	-37.11°, -12.28°	SA	2000-3000	~18.7%	Allopatric	2015	GPS: CatTraQ (Mobile Action Technology, Inc. 2013) loggers, 42 × 25 × 10 mm, 25 g (incl. tape)	Schoombie et al. (2017)
Gough Island	-40.31°, -9.91°	SA	<5000	<37.5%	Allopatric	2013	GPS: CatTraQ (Mobile Action Technology, Inc. 2013) loggers, 42 × 25 × 10 mm, 25 g (incl. tape)	Schoombie et al. (2017)
South Georgia	-54.0°, -38.03°	LMA	5000	~24.5%	Allopatric	2009, 2014	GPS: i-gotU GT-120 (MobileAction Technology, Taiwan; 25 g)	BAS (this study)
Marion Island	-46.89°, 37.75°	LMA	507	~2.4%	Sympatric	2015-17	GPS: CatLog-S loggers, Perthold Engineering LLC USA, 50 × 22 × 8 mm, 34 g	Carpenter-Kling et al. (2020)
Marion Island	-46.89°, 37.75°	SA	1838	~9.6%	Sympatric	2015-17	GPS: CatLog-S loggers, Perthold Engineering LLC USA, 50 × 22 × 8 mm, 34 g	Carpenter-Kling et al. (2020)
Iles Crozet	-46.42°, 51.98°	LMA	2300	~11.2%	Sympatric	2008	PTT: Microwave Telemetry, Solar, duty cycle 10/24, 62 × 18 × 14 mm, 18 g	CNRS (this study), see Delord et al. (2014)
Iles Crozet	-46.42°, 51.98°	SA	2040	~15.8%	Sympatric	2008	PTT: Microwave Telemetry, Solar, duty cycle 10/24, 62 × 18 × 14 mm, 18 g	CNRS (this study), see Delord et al. (2014)
Macquarie Island	-54.61°, 158.85°	LMA	1281	~6.3%	Allopatric	2002	PTT: Microwave Telemetry, 50 × 15 × 15 mm, 30 g	Cleeland et al. (2019)

TABLE 2 Environmental layers used in habitat models for light-mantled and sooty albatrosses.

Variable (units)	Data source	Temporal scale	Spatial scale	Relevance
Sea-surface temperature (SST, °C)	Global ocean ensemble physics reanalysis, CMEMS (Global Monitoring and Forecasting Centre, 2021)	Monthly composite	0.25×0.25 degrees	Indicative of fronts and water mass
log(Chlorophyll <i>a</i> gradient)	Calculated from Global ocean biogeochemistry hindcast, CMEMS (Global Monitoring and Forecasting Centre, 2021) using R package 'grec' (Lau-Medrano, 2020)	Monthly composite	0.25×0.25 degrees	Chlorophyll <i>a</i> is a proxy for marine productivity
Bathymetry (m)	Global Bathymetric Chart of the Oceans (GEBCO Compilation Group, 2020)	Static	0.00833×0.00833 degrees, resampled to 0.25×0.25 degrees using the 'terra' package (Hijmans et al., 2022)	Identifies shelf and pelagic zones, and potential upwellings
log(eddy kinetic energy)	Calculated from north and east current velocities, Global ocean ensemble physics reanalysis, CMEMS (Global Monitoring and Forecasting Centre, 2021)	Monthly composite	0.25×0.25 degrees	Index of mesoscale oceanic activity, often indicative of prey aggregations

TABLE 3 Trip characteristics of light-mantled albatrosses (LMA) and sooty albatrosses (SA) for each year tracked.

Season	Breeding site	Species	<i>n</i>	Mean trip length (days)	Mean distance travelled (km)	Mean max displacement (km)
2015	Tristan da Cunha	SA	3	16.17±2.16	6339±986	1682±227
2013	Gough Island	SA	11	8.45±4.54	4826±2328	1307±327
2009	South Georgia	LMA	6	7.61±3.83	4828±2128	1546±633
2014	South Georgia	LMA	12	11.45±4.50	5715±2600	1259±474
2015	Marion Island	LMA	4	14.48±5.58	5782±2308	1312±704
2015	Marion Island	SA	3	11.72±2.09	4402±1101	1225±360
2016	Marion Island	LMA	6	17.00±3.99	7696±2057	2135±690
2016	Marion Island	SA	10	12.05±2.11	5601±1568	1273±237
2017	Marion Island	LMA	11	13.56±4.45	5640±2064	1548±762
2017	Marion Island	SA	8	10.10±2.29	4226±1296	953±347
2008	Iles Crozet	LMA	4	13.84±2.54	5666±1938	2455±161
2008	Iles Crozet	SA	3	16.50±10.40	6913±5018	2210±1090
2002	Macquarie Island	LMA	6	12.17±2.29	4809±399	1202±267

3 | RESULTS

3.1 | Trip characteristics

Trips of light-mantled albatrosses were on average 12.66 ± 4.62 days and covered on average 5723 ± 2151 km, whereas those of sooty albatrosses were on average 11.25 ± 4.58 days and covered an average 5154 ± 2132 km. The average maximum range flown from the colony was 1562 ± 675 km for light-mantled albatrosses and 1318 ± 495 km for sooty albatrosses (see Table 3). When pooling trips from all years, light-mantled albatrosses from South Georgia took the shortest

trips (10.17 ± 4.57 days), and those from Marion Island the longest (12.72 ± 4.57 days). There was much higher variation in average trip lengths among sooty albatross colonies, with birds from Gough Island foraging for 8.45 ± 4.54 days, and birds from Tristan da Cunha (16.17 ± 2.16 days) and Iles Crozet foraging for almost twice as long (16.5 ± 10.4 days). However, the longest-lasting foraging trips were not always the ones where birds reached the greatest distances from their breeding colonies. In both light-mantled and sooty albatrosses, birds from Crozet attended the most distant foraging areas, 2456 ± 161 and 2210 ± 1091 km from their respective colonies. Light-mantled albatrosses from Macquarie Island (1203 ± 267 km)

and sooty albatrosses from Marion Island (1145 ± 323 km) had the shortest maximum displacements. Finally, the average distance travelled in a foraging trip was greatest for Marion Island light-mantled albatrosses (6255 ± 2205 km) and Crozet Island sooty albatrosses (6913 ± 5019 km). The shortest average distance travelled was 4810 ± 399 km for Macquarie Island light-mantled albatrosses and 4826 ± 2328 km for Gough Island sooty albatrosses.

3.2 | Habitat preferences

Light-mantled albatrosses in both sympatry and allopatry with sooty albatrosses preferentially foraged in cold-water areas of 0 – 5°C , and avoided water temperatures $>15^\circ\text{C}$. At Crozet, Marion, and Macquarie Islands, light-mantled albatrosses mainly travelled south to forage in areas close to the ice edge, whereas at South Georgia, they foraged at the ice edge and to as far north as the Antarctic Polar Front. There was a slight tendency to use areas with high chlorophyll *a* gradients (indicating frontal zones), particularly at Iles Crozet. Preferred water depths were 2000 – 4000 m (Figure 2c). All environmental variables modelled had a significant influence on habitat preference, though the most influential was sea-surface temperature (Supplementary Tables 1 and 2).

In contrast to light-mantled albatrosses, sooty albatrosses did not show consistent preferences across sites. When in allopatry, sooty albatrosses foraged preferentially in cold (0 – 5°C) and cool waters (10 – 15°C), even though most available habitat was 15 – 25°C (Figure 2e). However, sooty albatrosses breeding in sympatry with light-mantled albatrosses foraged preferentially in waters of 15 – 20°C and targeted areas with high chlorophyll *a* gradients (Figure 2h). Sooty albatrosses avoided the cold-water areas ($<5^\circ\text{C}$) frequented by their congener, even though sites where the two species breed in sympatry are further south than those where only sooty albatrosses are present. Zones of high eddy kinetic energy were targeted by sooty albatrosses across their range (Figure 2f). Again, all environmental variables modelled significantly influenced habitat preference, and there were different relationships displayed at sympatric and allopatric colonies (Supplementary Tables 4 and 5).

Sea-surface temperature was the most important predictor in models for both species, with similar relationships for all environmental variables seen across colonies of light-mantled albatrosses, and clear differences in these relationships seen between colonies of sooty albatrosses, depending on whether they were breeding in sympatry or allopatry (Figure 3, Supplementary Tables 3 and 6).

4 | DISCUSSION

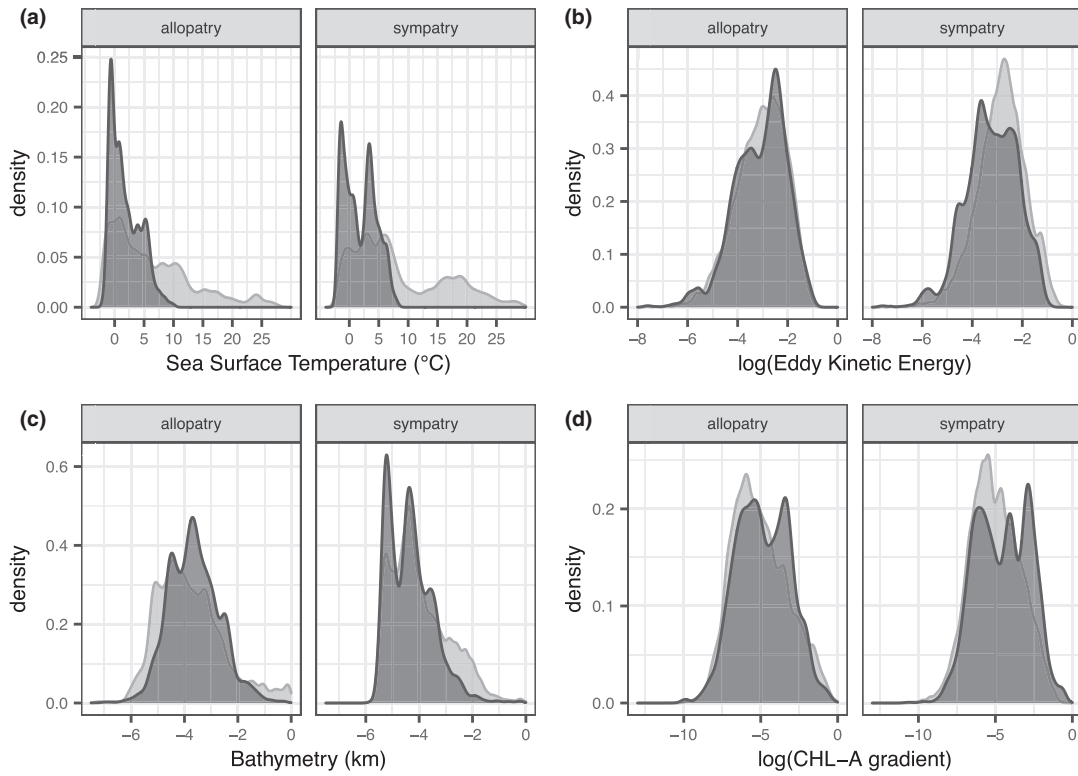
Despite their morphological and behavioural similarities, the foraging habitat preferences of the two species of *Phoebetria* albatross differ significantly from one another when breeding in sympatry. The preference of light-mantled albatrosses for cold-water areas (either cold upwelling zones or the ice edge) remains consistent

throughout their range. In contrast, habitat preferences of sooty albatrosses differ whether they breed in sympatry with their congener or in allopatry. Even though the islands where they breed in sympatry are further south, the sooty albatrosses at those sites foraged preferentially in warm water areas, which was not a preferred habitat when breeding in allopatry in the northern portion of their range. This suggests that there is a competitive mechanism at work driving habitat segregation.

Given the absence of consistent habitat preferences in both species across their global distributions, the observed niche segregation between sympatric *Phoebetria* albatrosses is unlikely to be driven by coevolution under competition. Competition is often considered to drive coevolved niche specialisation in speciose communities, but demonstrating coevolutionary shaping of the niches of competitors is challenging, especially as there are alternative, more plausible drivers (Connell, 1980). In general, ecological niche theory predicts that differentiation of some kind (e.g. prey specialisation, spatiotemporal segregation) should occur when multiple species with similar niches compete for resources (Tilman, 2007). Specialist foraging strategies that coevolved at a species level due to historical competition (i.e. following reciprocal divergent selection for different phenotypes between species) are likely to be less flexible than particular strategies that emerge within populations due to behavioural plasticity or density-dependent mechanisms. In an ecological community, it is often impossible to tell whether the observed specialisations are coevolved or are adaptations that developed over shorter timescales. In general, sympatric speciation – particularly on isolated islands where the population is under divergent ecological selection – is accepted as a plausible route to the formation of novel species (Jiggins, 2006). Indeed, there is recent empirical evidence for this in some seabird species (Friesen et al., 2007). Had *Phoebetria* speciation occurred in sympatry – with competition driving selection for resource segregation and leading to subsequent reproductive isolation – one would expect more consistent habitat preferences within each species that carried over to subsequently established allopatric populations. However, this ‘ghost of competition past’ (Connell, 1980) was not observed in our study: although the foraging habitat preferences of light-mantled albatrosses were consistent across sites, those of sooty albatrosses were not. If sympatric speciation *did* occur in these species, it is therefore unlikely to have been driven by competitive segregation of foraging niches. Based on simulation models, the alternative mechanism – speciation in allopatry with subsequent reestablishment of sympatric populations – is considered to be the more common mode of avian speciation (Phillimore et al., 2008). If this is the case, the observed niche segregation in sympatry cannot be the product of coevolution, as co-occurrence is a critical requirement for reciprocal selection to occur (Connell, 1980, 1985; Janzen, 1980).

Even if the habitat preferences of the *Phoebetria* albatrosses are not the result of coevolved niche differentiation, this does not preclude the possibility that competition influences their realised niches in sympatry. As such, we see three alternative mechanisms for the

Light-mantled Albatross



Sooty Albatross

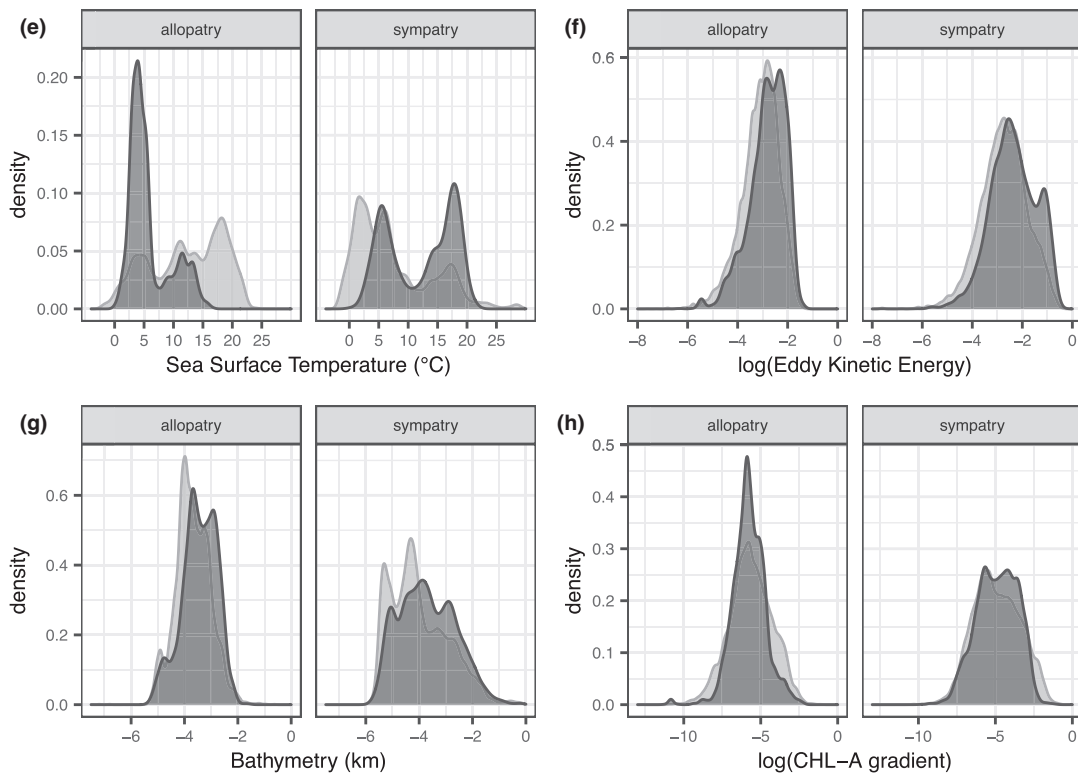
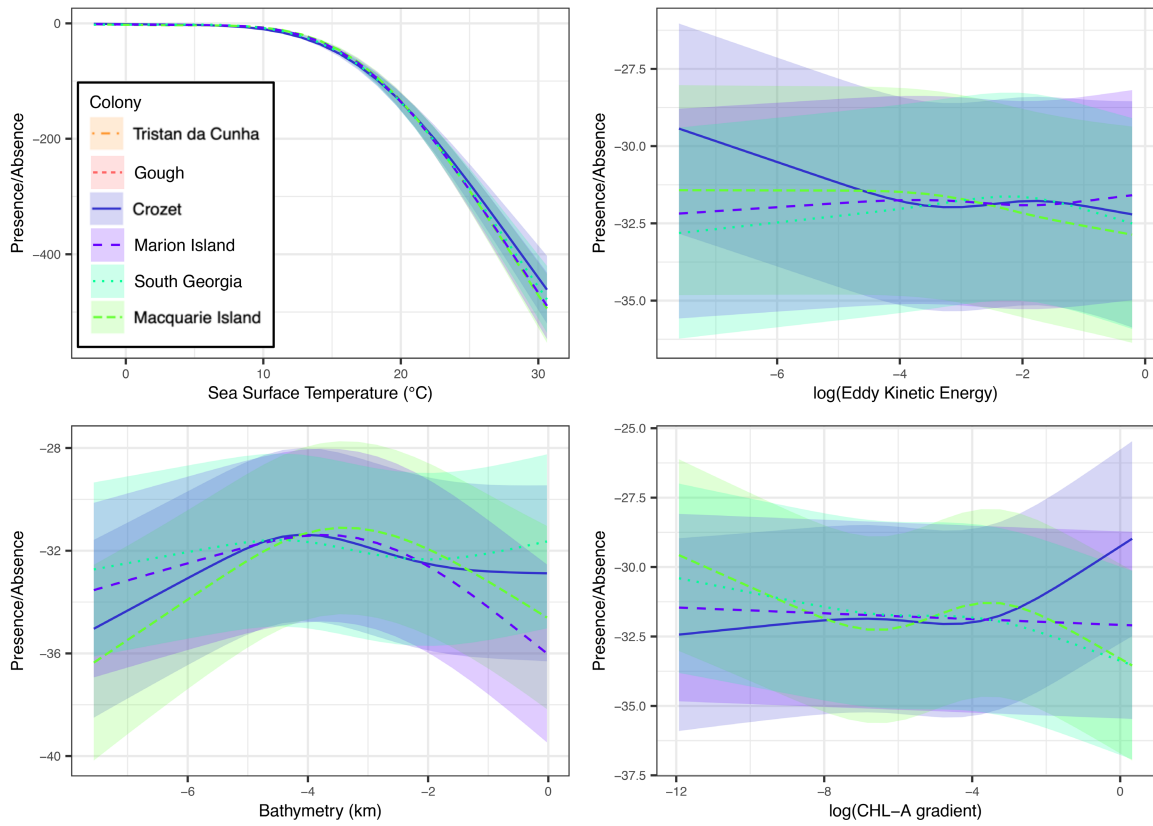


FIGURE 2 Density plots showing the proportion of presences (dark grey) and pseudoabsences (light grey) across key environmental variables for light-mantled and sooty albatrosses.

Light-mantled albatross



Sooty albatross

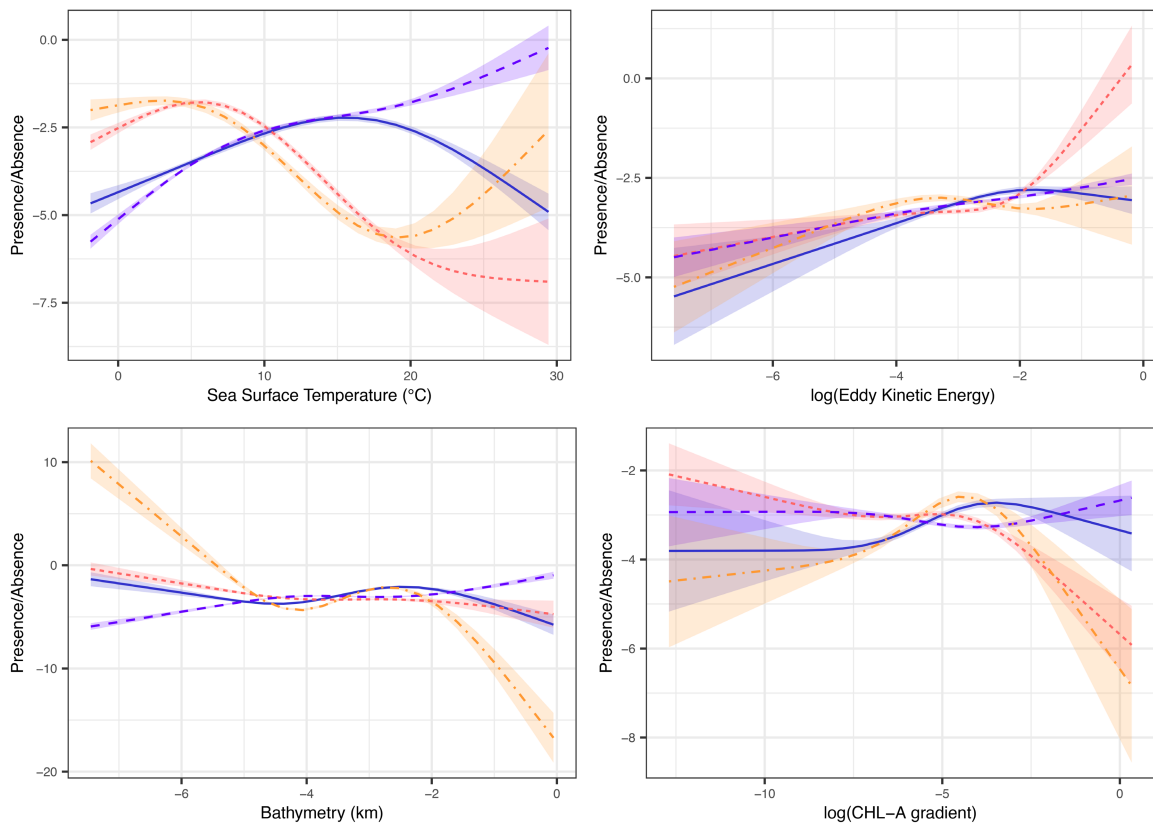


FIGURE 3 Predicted relationships between environmental variables and likelihood of presence of foraging light-mantled albatrosses (LMA) and sooty albatrosses (SA) during breeding. Green and teal lines indicate allopatric LMA colonies; red and orange lines indicate allopatric SA colonies; blue and purple lines indicate sympatric colonies. Individual colonies are indicated by line type in the legend. Y-axes on log-odds scale.

patterns observed. Firstly, ecological character displacement – the concept that sympatric species competing for limited resources should experience selection for divergent resource use (Brown Jr. & Wilson, 1956) – may be occurring at a population level. There are few cases with truly unequivocal support for ecological character displacement, with one review finding only nine of 144 case studies convincingly ruled out alternative explanations (Stuart & Losos, 2013). In our study, character displacement is difficult to confirm as the trait in question is behavioural rather than morphological, and multiple measures from the same individuals through time are required to confirm whether it is fixed or plastic.

Secondly, habitat segregation of the sympatric populations may be demonstrating a socially mediated variation of the ideal free distribution (IFD), the theory assuming that equally competitive organisms will act to maximise their foraging efficiency by moving to areas with decreased densities of competitors (Fretwell, 1969). It is theoretically possible that the observed segregation developed because individuals avoid areas of highest competition and is now maintained through social learning or preferred associations. However, multiple studies have shown that the space-use of seabirds and their prey rarely appears as expected under the IFD (Logerwell & Hargreaves, 1996; Swartzman & Hunt, 2000). This is most likely because seabirds rarely conform with the associated IFD assumptions that individuals have perfect environmental information and can engage in cost-free movement (Fauchald, 2009). In many colonial seabirds, density-dependent segregation by colony has been observed (e.g. Wakefield et al., 2013), but we did not find this. The speciose nature of seabird breeding aggregations means both intra- and interspecific competition are high. There is evidence in geese that the density of multispecies assemblages can influence fitness more than the density of conspecifics alone (Schmutz & Laing, 2002), and it is plausible that similar effects occur at seabird breeding islands; however, this has not been formally tested. In our study, we observed segregation between presumably unequal competitors (i.e. between the two species) and use of the same foraging areas by equal competitors (i.e. highly consistent habitat preferences within species, even among colonies). There was geographic overlap of foraging areas (within species) in birds from Marion and Crozet (Figure 1), although they were tracked in different years. Recent work on wandering albatrosses *Diomedea exulans* at Marion and Crozet has also shown no foraging area segregation between these two colonies (Orgeret et al., 2021). Future tracking of birds from neighbouring colonies in the same year is needed to rule out among-colony habitat partitioning in the *Phoebetria* albatrosses.

Thirdly, the observed differences in habitat preference between populations of sooty albatrosses may reflect behavioural plasticity. This we consider to be the most likely explanation. Strict

resource preferences have been shown to relax in conditions of scarcity (Bergström et al., 2004; Snell-Rood & Papaj, 2009), which is adaptive in novel or dynamic environments where preferred resources are unavailable. Indeed, there should be selection for reversible phenotypic plasticity in environments that vary within the lifetime of an individual, due to the high costs of mismatch between preference and availability of resources (Snell-Rood, 2013). This is particularly relevant for long-lived species such as albatrosses, which can live for >40 years (Froy et al., 2017), as they presumably encounter greater environmental variability than shorter-lived species. There is evidence that habitat preferences in other Procellariiformes are not consistent between breeding populations (Clay et al., 2016; Péron et al., 2018; Torres et al., 2015). This suggests that flexibility of habitat preferences is adaptive at a species level. Furthermore, evidence for plasticity in habitat preference comes from Marion Island, where sooty albatrosses tracked during incubation showed high interannual variability in foraging behaviour, and light-mantled albatrosses targeted specific eddy fields only in years when eddy kinetic energy was particularly high (Carpenter-Kling et al., 2020). Given the dynamic environments in which albatrosses forage, we would expect foraging success (and subsequently, reproductive success) to be higher when preferences are plastic. We observed divergent habitat preference among colonies of sooty albatross, which supports the conjecture that this trait is behaviourally plastic. The consistency of preferences among light-mantled albatross colonies does not, however, confirm that this species is inflexible. To truly understand the flexibility of albatross habitat preferences, we would require repeated measures on individuals (to determine whether there is individual-level specialisation), across years (to determine the response within populations to changes in local conditions) and a combination of both (to understand within-population variation of individual responses to changing conditions).

Flexibility in habitat preferences can buffer the effects of anthropogenic environmental change, which is occurring at an unprecedented rate (Gruber et al., 2019). If colony-level habitat preferences are fixed, further research is required to ascertain whether this inflexibility is genetic (due to past selection) or cultural (due to learning). Furthermore, studies of ontogenetic changes in habitat preferences are important for understanding the potential flexibility within individuals (Frankish et al., 2020). Unfortunately, albatrosses are unsuitable for cross-fostering studies, which could explore the varying influences of genotype and the local environment on habitat preferences. High philopatry in seabirds minimises gene flow across breeding ranges, and there has been some suggestion that differentiation is occurring in sooty albatrosses, although citing unpublished data (Robertson, 1998). If this is the case, we are more likely to see

differential responses among colonies of this species to environmental change. Importantly, even if birds are flexible in their habitat preferences, this may not be sufficient to compensate for poor environmental conditions: evidence from South Georgia shows that in years when grey-headed albatrosses foraged mostly on krill *Euphausia superba* in Antarctic waters – rather than cephalopods in the Antarctic Polar Frontal Zone, which is more common in years with favourable environmental conditions – they experienced poorer breeding success (Xavier et al., 2013). Flexible preferences do not always manifest as a shift to a generalist niche, as there is also evidence that when foraging conditions deteriorate, the diets of sympatric species show greater divergence (Barger & Kitaysky, 2012). Increased niche segregation in response to stress, such as greater anthropogenic pressures, can exacerbate impacts affecting particular aspects of the niche space. Threats may have synergistic effects, for example, if climate change causes shifts in habitat preference leading birds to choose foraging areas with an increased risk of incidental mortality in fisheries.

Foraging habitat location influences exposure to threats and, ultimately, the population trend. Sooty albatross are listed as Endangered, and light-mantled albatross as Near-threatened by the International Union for Conservation of Nature (IUCN, 2022), and both species are listed by the Agreement on the Conservation of Albatrosses and Petrels (Phillips et al., 2016). Decreasing population trends have been observed at almost all sooty albatross colonies, with the exception of Marion Island (Agreement on the Conservation of Albatrosses and Petrels, 2010a; Delord et al., 2008; Schoombie et al., 2016; Weimerskirch et al., 2018). This is proposed, in part, to be the result of increased overlap with subtropical tuna fisheries (Delord et al., 2008). It is also possible the extreme southerly latitudes of cold-water habitats near Marion and Crozet (~60°S) are generally inhospitable to a species such as the sooty albatross, which presumably evolved in the subtropics. Conversely, the light-mantled albatross population has likely increased, or at least remained stable, at Iles Crozet in recent years (Weimerskirch et al., 2018). However, the cold-water specialism of light-mantled albatrosses may increase their vulnerability to warming seas due to climate change (Inchausti et al., 2003; Schoombie et al., 2016). The distribution of Antarctic krill, an important prey item for this species (Green et al., 1998; Jaeger et al., 2010), is rapidly contracting southwards (Atkinson et al., 2019), and the increased costs associated with foraging even further to the south may reduce fitness in light-mantled albatrosses and contribute to future population declines.

Evidence from stable isotopes indicates that the cold-water preferences observed in incubating light-mantled albatrosses likely persist through chick-rearing and the non-breeding season. By measuring the isotopic ratios in chick and adult feathers, one can approximate the latitude of foraging during chick-rearing and moult, respectively (Jaeger et al., 2013), assuming that isotopic differences are caused by dietary origin and not by other factors known to affect isotopic composition (Shiple & Matich, 2020). Studies from both Crozet and Marion Islands show that light-mantled albatrosses

forage further to the south than sooty albatrosses during chick rearing (Connan et al., 2014, 2018; Jaeger et al., 2010), as well as in incubation (this study). Interestingly, there is some indication that sooty albatrosses from Crozet foraged in subantarctic waters during chick-rearing (Jaeger et al., 2010), rather than the subtropical waters observed in this study. It may be that they consumed squid and penguin carrion taken from near Crozet Island, whereas light-mantled albatrosses showed relatively greater reliance on Antarctic krill, which is not available outside of the Antarctic zone (Jaeger et al., 2010). However, dietary studies on Crozet sooty albatrosses also showed squid beaks from subtropical species during this time, so their dietary niche remains equivocal (Connan et al., 2014). The reasonably consistent isotope ratios found in adult light-mantled albatross feathers indicate an annual fidelity to the Southern Ocean (Connan et al., 2014), and recent dietary studies emphasise the importance of Southern Ocean squid in the diet of this species across its range (Cherel et al., 2023). Sooty albatrosses, however, mostly overwinter in the subtropics (Schoombie et al., 2022), with the exception of those from Gough Island, which join their congener at higher latitudes (Connan et al., 2018). Given that breeding sooty albatrosses from Gough Island also target cold-water areas, this may indicate some consistency between breeding and non-breeding habitat preferences across the genus, which merits further study. Indeed, further work on foraging habitat choice in the non-breeding season is important to understand habitat preferences when these species are not constrained to a central place.

Finally, we acknowledge that comparisons of species pairs in sympatry and allopatry do not account for the reality that resource competition occurs within a wide community of ecologically similar species (Bodey et al., 2014). Ecological conditions are complex, and unquantified factors are likely to influence the foraging distributions of pelagic predators. The speciose nature of seabird breeding assemblages results in multiple layers of morphological segregation between, for example, small petrels, penguins, and albatrosses (Abrams & Griffiths, 1981), but more detailed comparative studies are required to identify how niche space is partitioned among sympatric (and morphologically more similar) *Thalassarche* and *Phoebetria* albatross species.

ACKNOWLEDGEMENTS

We are grateful to all fieldworkers, particularly Claudia Mischler, Derren Fox, and Stacey Adlard (Bird Island); Delia Davies, Mara Nydegger (Gough Island); Janine Schoombie, Jessie Berndt, Albert Snyman, Makhudu Masotla, and David Green (Marion Island); and Y Charbonnier and JB Thiebot (Crozet). We thank Rosemary Gales and Rachael Alderman for sharing data from Macquarie Island. LKB was supported by the Gates Cambridge Trust. This study has been conducted using E.U. Copernicus Marine Service Information. Bird Island tracking was approved by the British Antarctic Survey Animal Welfare and Ethics Committee and carried out with the permission of the Government of South Georgia and the South Sandwich Islands (permits nos. BAS 09-10, SCI-2014-014, and WPA-2014-016). Research was approved by the University of Cape Town's Animal

Ethics Committee (2017/V10REV/PRyan). Work on Marion Island received ethics clearance from the Nelson Mandela University Animal Ethics Committee (A14-SCI-ZOO-012), and clearance from the Department of Forestry, Fisheries and the Environment (permit EC-2016-11-25). The Ethics Committee of IPEV and the Comité Environnement Polaire approved the field procedures for the French Southern Territories.

CONFLICT OF INTEREST STATEMENT

The authors have no conflict of interest to disclose.

DATA AVAILABILITY STATEMENT

The data that support the findings of this study are openly available in Birdlife Seabird Tracking Database at <https://www.seabirdtracking.org>, dataset ids: 1312, 1208, 1313, 1290, 420, 443, 650, 651, 1292, 1384, 1529, 1530).

REFERENCES

- Abrams, R., & Griffiths, A. (1981). Ecological structure of the pelagic seabird Community in the Benguela Current Region. *Marine Ecology Progress Series*, 5, 269–277.
- Agreement on the Conservation of Albatrosses and Petrels. (2010a). ACAP Species assessments: Sooty Albatross *Phoebastria fusca*. <http://www.acap.aq>
- Agreement on the Conservation of Albatrosses and Petrels. (2010b). ACAP Species assessments: Light-mantled Albatross *Phoebastria palpebrata*. <http://www.acap.aq>
- Antolos, M., Shaffer, S. A., Weimerskirch, H., Tremblay, Y., & Costa, D. P. (2017). Foraging behavior and energetics of albatrosses in contrasting breeding environments. *Frontiers in Marine Science*, 4, 414.
- Araya, Y. N., Silvertown, J., Gowing, D. J., McConway, K. J., Linder, H. P., & Midgley, G. (2011). A fundamental, eco-hydrological basis for niche segregation in plant communities. *New Phytologist*, 189, 253–258.
- Ashmole, N. P. (1963). The regulation of numbers of tropical oceanic birds. *IBIS* 103b:458–473, 103b, 458–473.
- Atkinson, A., Hill, S. L., Pakhomov, E. A., Siegel, V., Reiss, C. S., Loeb, V. J., Steinberg, D. K., Schmidt, K., Tarling, G. A., Gerrish, L., & Saille, S. F. (2019). Krill (*Euphausia superba*) distribution contracts southward during rapid regional warming. *Nature Climate Change*, 9, 142–147.
- Barger, C. P., & Kitaysky, A. S. (2012). Isotopic segregation between sympatric seabird species increases with nutritional stress. *Biology Letters*, 8, 442–445.
- Bentley, L. K., Manica, A., Dilley, B. J., Ryan, P. G., & Phillips, R. A. (2023). Divergent foraging habitat preferences between summer-breeding and winter-breeding Procellariiforms. *IBIS*, 165, 618–628.
- Bergström, A., Nylin, S., & Nygren, G. H. (2004). Conservative resource utilization in the common blue butterfly—evidence for low costs of accepting absent host plants? *Oikos*, 107, 345–351.
- Berruti, A. (1979). The breeding Biologies of the sooty albatrosses *Phoebastria Fusca* and *P. Palpebrata*. *Emu - Austral Ornithology*, 79, 161–175.
- Bodey, T. W., Ward, E. J., Phillips, R. A., McGill, R. A. R., & Bearhop, S. (2014). Species versus guild level differentiation revealed across the annual cycle by isotopic niche examination. *Journal of Animal Ecology*, 83, 470–478.
- Bolton, M., Conolly, G., Carroll, M., Wakefield, E. D., & Caldow, R. (2019). A review of the occurrence of inter-colony segregation of seabird foraging areas and the implications for marine environmental impact assessment. *IBIS*, 161, 241–259.
- Brown, W. L., Jr., & Wilson, E. O. (1956). Character displacement. *Systematic Biology*, 5, 49–64.
- Campioni, L., Granadeiro, J. P., & Catry, P. (2016). Niche segregation between immature and adult seabirds: Does progressive maturation play a role? *Behavioral Ecology*, 27, 426–433.
- Carpenter-Kling, T., Reisinger, R. R., Orgeret, F., Connan, M., Stevens, K. L., Ryan, P. G., Makhado, A., & Pistorius, P. A. (2020). Foraging in a dynamic environment: Response of four sympatric sub-Antarctic albatross species to interannual environmental variability. *Ecology and Evolution*, 10, 11277–11295.
- Cherel, Y., Trouvé, C., & Bustamante, P. (2023). Cephalopod prey of light-mantled sooty albatross *Phoebastria palpebrata*, resource partitioning amongst Kerguelen albatrosses, and teuthofauna of the southern Indian Ocean. *Deep Sea Research Part I: Oceanographic Research Papers*, 198, 104082.
- Clay, T. A., Manica, A., Ryan, P. G., Silk, J. R. D., Croxall, J. P., Ireland, L., & Phillips, R. A. (2016). Proximate drivers of spatial segregation in non-breeding albatrosses. *Scientific Reports*, 6, 29932.
- Clelland, J. B., Alderman, R., Bindoff, A., Lea, M.-A., McMahon, C. R., Phillips, R. A., Raymond, B., Sumner, M. D., Terauds, A., & Wotherspoon, S. J. (2019). Factors influencing the habitat use of sympatric albatrosses from Macquarie Island, Australia. *Marine Ecology Progress Series*, 609, 221–237.
- Cloyed, C. S. (2014). Forest structure affects resource partitioning between pygmy and white-breasted nuthatches. *Coevolution*, 2, 26–30.
- Connan, M., Bonnevie, B., & McQuaid, C. (2018). Ontogeny, tissue, and species but not sex influence stable isotopic values of three albatross species. *Polar Biology*, 41, 1175–1186.
- Connan, M., McQuaid, C., Bonnevie, B., Smale, M., & Cherel, Y. (2014). Combined stomach content, lipid and stable isotope analyses reveal spatial and trophic partitioning among three sympatric albatrosses from the Southern Ocean. *Marine Ecology Progress Series*, 497, 259–272.
- Connell, J. H. (1980). Diversity and the coevolution of competitors, or the ghost of competition past. *Oikos*, 35, 131–138.
- Connell, J. H. (1985). On testing models of competitive coevolution. *Oikos*, 45, 298–300.
- Cooper, J., & Klages, N. T. W. (1995). The diets and dietary segregation of sooty albatrosses (*Phoebastria* spp.) at subantarctic Marion Island. *Antarctic Science*, 7, 15–23.
- Croxall, J., & Prince, P. (1980). Food, feeding ecology and ecological segregation of seabirds at South Georgia. *Biological Journal of the Linnean Society*, 14, 103–131.
- Delord, K., Barbraud, C., Bost, C., Cherel, Y., Guinet, C., & Weimerskirch, H. (2014). Atlas of top predators from French Southern Territories in the southern Indian Ocean, Research Report: CNRS. http://www.cebc.cnrs.fr/ecommm/Fr_ecomm/ecommm_ecor_O11.html
- Delord, K., Besson, D., Barbraud, C., & Weimerskirch, H. (2008). Population trends in a community of large Procellariiforms of Indian Ocean: Potential effects of environment and fisheries interactions. *Biological Conservation*, 141, 1840–1856.
- Fauchald, P. (2009). Spatial interaction between seabirds and prey: Review and synthesis. *Marine Ecology Progress Series*, 391, 139–151.
- Frankish, C. K., Phillips, R. A., Clay, T. A., Somveille, M., & Manica, A. (2020). Environmental drivers of movement in a threatened seabird: Insights from a mechanistic model and implications for conservation. *Diversity and Distributions*, 26, 1315–1329.
- Fretwell, S. D. (1969). On territorial behavior and other factors influencing habitat distribution in birds. *Acta Biotheoretica*, 19, 45–52.
- Friesen, V. L., Smith, A. L., Gomez-Diaz, E., Bolton, M., Furness, R. W., Gonzalez-Solis, J., & Monteiro, L. R. (2007). Sympatric speciation by allochrony in a seabird. *Proceedings of the National Academy of Sciences*, 104, 18589–18594.
- Froy, H., Lewis, S., Nussey, D. H., Wood, A. G., & Phillips, R. A. (2017). Contrasting drivers of reproductive ageing in albatrosses. *The Journal of Animal Ecology*, 86, 1022–1032.

- GEBCO Compilation Group. (2020). Gebco 2020 Grid.
- Global Monitoring and Forecasting Centre. (2021). Global Ocean Biogeochemistry Hindcast, E.U. Copernicus Marine Service Information.
- Granroth-Wilding, H. M. V., & Phillips, R. A. (2019). Segregation in space and time explains the coexistence of two sympatric sub-Antarctic petrels. *IBIS*, *161*, 101–116.
- Grant, P. R., & Grant, B. R. (2006). Evolution of character displacement in Darwin's finches. *Science*, *313*, 224–226.
- Green, K., Kerry, K. R., Disney, T., & Clarke, M. R. (1998). Dietary studies of light-mantled sooty albatrosses *Phoebastria palpebrata* from Macquarie and Heard islands. *Marine Ornithology*, *26*, 19–26.
- Gruber, N., Clement, D., Carter, B. R., Feely, R. A., Van Heuven, S., Hoppema, M., Ishii, M., Key, R. M., Kozyr, A., & Lauvset, S. K. (2019). The oceanic sink for anthropogenic CO₂ from 1994 to 2007. *Science*, *363*, 1193–1199.
- Hijmans, R. J., Bivand, R., Forner, K., Ooms, J., Pebesma, E., & Sumner, M. D. (2022). terra. R Package Version 1.5–34. <https://CRAN.R-project.org/package=terra>
- Hildén, O. (1965). Habitat selection in birds: A review. *Annales Zoologici Fennici*, *2*, 53–75.
- Hutto, R. L. (1985). Habitat selection by nonbreeding, migratory land birds. In *Habitat Selection in Birds* (pp. 455–476). Academic Press Inc.
- Inchausti, P., Guinet, C., Koudil, M., Durbec, J.-P., Barbraud, C., Weimerskirch, H., Cherel, Y., & Jouventin, P. (2003). Inter-annual variability in the breeding performance of seabirds in relation to oceanographic anomalies that affect the Crozet and the Kerguelen sectors of the Southern Ocean. *Journal of Avian Biology*, *34*, 170–176.
- Ito, K., Watanabe, Y. Y., Kokubun, N., & Takahashi, A. (2021). Inter-colony foraging area segregation quantified in small colonies of Adélie penguins. *IBIS*, *163*, 90–98.
- IUCN. (2022). The IUCN red list of threatened species. Version 2022-1. <https://www.iucnredlist.org>
- Jaeger, A., Connan, M., Richard, P., & Cherel, Y. (2010). Use of stable isotopes to quantify seasonal changes of trophic niche and levels of population and individual specialisation in seabirds. *Marine Ecology Progress Series*, *401*, 269–277.
- Jaeger, A., Jaquemet, S., Phillips, R., Wanless, R., Richard, P., & Cherel, Y. (2013). Stable isotopes document inter- and intra-specific variation in feeding ecology of nine large southern Procellariiformes. *Marine Ecology Progress Series*, *490*, 255–266.
- Jankowski, J. E., Robinson, S. K., & Levey, D. J. (2010). Squeezed at the top: Interspecific aggression may constrain elevational ranges in tropical birds. *Ecology*, *91*, 1877–1884.
- Janzen, D. H. (1980). When is it coevolution? *Evolution*, *34*, 611–612.
- Jiggins, C. D. (2006). Sympatric speciation: Why the controversy? *Current Biology*, *16*, R333–R334.
- Jones, M. E., & Barmuta, L. A. (2000). Niche differentiation among sympatric Australian dasyurid carnivores. *Journal of Mammalogy*, *81*, 434–437.
- Kiszka, J., Simon-Bouhet, B., Martinez, L., Pusineri, C., Richard, P., & Ridoux, V. (2011). Ecological niche segregation within a community of sympatric dolphins around a tropical Island. *Marine Ecology Progress Series*, *433*, 273–288.
- Kokkoris, G. D., Troumbis, A. Y., & Lawton, J. H. (1999). Patterns of species interaction strength in assembled theoretical competition communities. *Ecology Letters*, *2*, 70–74.
- Lau-Medrano, W. (2020). Grec: Gradient-based recognition of spatial patterns in environmental data.
- Logerwell, E. A., & Hargreaves, N. B. (1996). The distribution of sea birds relative to their fish prey off Vancouver Island: Opposing results at large and small spatial scales. *Fisheries Oceanography*, *5*, 163–175.
- MacArthur, R., & Levins, R. (1964). Competition, habitat selection, and character displacement in a patchy environment. *Proceedings of the National Academy of Sciences*, *51*, 1207–1210.
- Martin, P. R., & Martin, T. E. (2001). Ecological and fitness consequences of species coexistence: A removal experiment with Wood warblers. *Ecology*, *82*, 189–206.
- Morris, D. W. (2003). Toward an ecological synthesis: A case for habitat selection. *Oecologia*, *136*, 1–13.
- Navarro, J., Votier, S. C., Aguzzi, J., Chiesa, J. J., Forero, M. G., & Phillips, R. A. (2013). Ecological segregation in space, time and trophic niche of sympatric planktivorous petrels. *PLoS One*, *8*, e62897.
- Orgeret, F., Reisinger, R. R., Carpenter-Kling, T., Keys, D. Z., Corbeau, A., Bost, C., Weimerskirch, H., & Pistorius, P. A. (2021). Spatial segregation in a sexually dimorphic central place forager: Competitive exclusion or niche divergence? *Journal of Animal Ecology*, *90*, 2404–2420.
- Péron, C., Authier, M., & Grémillet, D. (2018). Testing the transferability of track-based habitat models for sound marine spatial planning. *Diversity and Distributions*, *24*, 1772–1787.
- Phillimore, A. B., Orme, C. D. L., Thomas, G. H., Blackburn, T. M., Bennett, P. M., Gaston, K. J., & Owens, I. P. F. (2008). Sympatric speciation in birds is rare: Insights from range data and simulations. *The American Naturalist*, *171*, 646–657.
- Phillips, R., Lewis, S., González-Solís, J., & Daunt, F. (2017). Causes and consequences of individual variability and specialization in foraging and migration strategies of seabirds. *Marine Ecology Progress Series*, *578*, 117–150.
- Phillips, R. A., Croxall, J. P., Silk, J. R. D., & Briggs, D. R. (2007). Foraging ecology of albatrosses and petrels from South Georgia: Two decades of insights from tracking technologies. *Aquatic Conservation: Marine and Freshwater Ecosystems*, *17*, S6–S21.
- Phillips, R. A., Gales, R., Baker, G. B., Double, M. C., Favero, M., Quintana, F., Tasker, M. L., Weimerskirch, H., Uhart, M., & Wolvaardt, A. (2016). The conservation status and priorities for albatrosses and large petrels. *Biological Conservation*, *201*, 169–183.
- Pianka, E. R., & Huey, R. B. (1978). Comparative ecology, resource utilization and niche segregation among Gekkonid lizards in the southern Kalahari. *Copeia*, *1978*, 691–701.
- Pyke, G. H. (1984). Optimal foraging theory: A critical review. *Annual Review of Ecology and Systematics*, *15*, 523–575.
- R Core Team. (2020). *R: A Language and Environment for Statistical Computing*. R Foundation for Statistical Computing.
- Reisinger, R. R., Carpenter-Kling, T., Connan, M., Cherel, Y., & Pistorius, P. A. (2020). Foraging behaviour and habitat-use drives niche segregation in sibling seabird species. *Royal Society Open Science*, *7*, 200649.
- Reisinger, R. R., Raymond, B., Hindell, M. A., Bester, M. N., Crawford, R. J. M., Davies, D., de Bruyn, P. J. N., Dilley, B. J., Kirkman, S. P., Makhado, A. B., Ryan, P. G., Schoombie, S., Stevens, K., Sumner, M. D., Tosh, C. A., Wege, M., Whitehead, T. O., Wotherspoon, S., & Pistorius, P. A. (2018). Habitat modelling of tracking data from multiple marine predators identifies important areas in the southern Indian Ocean. *Diversity and Distributions*, *24*, 535–550.
- Robertson, C. J. R. (1998). Towards a new taxonomy for albatrosses. In *Chipping Norton, NSW: Surrey Beatty*, 1998. NSW.
- Salewski, V., Bairlein, F., & Leisler, B. (2003). Niche partitioning of two Palearctic passerine migrants with Afrotropical residents in their west African winter quarters. *Behavioral Ecology*, *14*, 493–502.
- Schmutz, J. A., & Laing, K. K. (2002). Variation in foraging behavior and body mass in broods of emperor geese (*Chen canagica*): Evidence for interspecific density dependence. *The Auk*, *119*, 996–1009.
- Schoombie, S., Connan, M., Dilley, B. J., Davies, D., Makhado, A. B., & Ryan, P. G. (2022). Non-breeding distribution, activity patterns and moulting areas of sooty albatrosses (*Phoebastria fusca*) inferred from geolocators, satellite trackers and biochemical markers. *Polar Biology*, *45*, 31–44.

- Schoombie, S., Crawford, R., Makhado, A., Dyer, B., & Ryan, P. (2016). Recent population trends of sooty and light-mantled albatrosses breeding on Marion Island. *African Journal of Marine Science*, 38, 119–127.
- Schoombie, S., Dilley, B. J., Davies, D., Glass, T., & Ryan, P. G. (2017). The distribution of breeding sooty albatrosses from the three most important breeding sites: Gough, Tristan and the Prince Edward islands. *EMU*, 117, 160–169.
- Shiple, O. N., & Matich, P. (2020). Studying animal niches using bulk stable isotope ratios: An updated synthesis. *Oecologia*, 193, 27–51.
- Siemers, B. M., & Schnitzler, H.-U. (2004). Echolocation signals reflect niche differentiation in five sympatric congeneric bat species. *Nature*, 429, 657–661.
- Snell-Rood, E. C. (2013). An overview of the evolutionary causes and consequences of behavioural plasticity. *Animal Behaviour*, 85, 1004–1011.
- Snell-Rood, E. C., & Papaj, D. R. (2009). Patterns of phenotypic plasticity in common and rare environments: A study of host use and color learning in the cabbage white butterfly *Pieris rapae*. *The American Naturalist*, 173, 615–631.
- Stuart, Y. E., & Losos, J. B. (2013). Ecological character displacement: Glass half full or half empty? *Trends in Ecology & Evolution*, 28, 402–408.
- Sumner, M. D., Wotherspoon, S. J., & Hindell, M. A. (2009). Bayesian estimation of animal movement from archival and satellite tags. *PLoS One*, 4, e7324.
- Svårdson, G. (1949). Competition and habitat selection in birds. *Oikos*, 1, 157–174.
- Swartzman, G., & Hunt, G. (2000). Spatial association between murrelets (*Uria* spp.), puffins (*Fratercula* spp.) and fish shoals near Pribilof Islands, Alaska. *Marine Ecology Progress Series*, 206, 297–309.
- Tarjuelo, R., Traba, J., Morales, M. B., & Morris, D. W. (2017). Isodars unveil asymmetric effects on habitat use caused by competition between two endangered species. *Oikos*, 126, 73–81.
- Tickell, W. L. N. (2000). *Albatrosses*. Yale University Press.
- Tilman, D. (2007). *Interspecific competition and multispecies coexistence*. Page Theoretical Ecology, Oxford University Press.
- Torres, L. G., Sutton, P. J. H., Thompson, D. R., Delord, K., Weimerskirch, H., Sagar, P. M., Sommer, E., Dilley, B. J., Ryan, P. G., & Phillips, R. A. (2015). Poor transferability of species distribution models for a pelagic predator, the Grey petrel, indicates contrasting habitat preferences across ocean basins. *PLoS One*, 10, e0120014.
- Wakefield, E. D., Bodey, T. W., Bearhop, S., Blackburn, J., Colhoun, K., Davies, R., Dwyer, R. G., Green, J. A., Gremillet, D., Jackson, A. L., Jessopp, M. J., Kane, A., Langston, R. H. W., Lesroel, A., Murray, S., Le Nuz, M., Patrick, S. C., Peron, C., Soanes, L. M., ... Hamer, K. C. (2013). Space partitioning without territoriality in gannets. *Science*, 341, 68–70.
- Weber, S. B., Richardson, A. J., Brown, J., Bolton, M., Clark, B. L., Godley, B. J., Leat, E., Opper, S., Shearer, L., Soetaert, K. E. R., Weber, N., & Broderick, A. C. (2021). Direct evidence of a prey depletion “halo” surrounding a pelagic predator colony. *Proceedings of the National Academy of Sciences*, 118, e2101325118.
- Weimerskirch, H. (2007). Are seabirds foraging for unpredictable resources? *Deep Sea Research Part II: Topical Studies in Oceanography*, 54, 211–223.
- Weimerskirch, H., Delord, K., Barbraud, C., Le Bouard, F., Ryan, P. G., Fretwell, P., & Marteau, C. (2018). Status and trends of albatrosses in The French Southern Territories, Western Indian Ocean. *Polar Biology*, 41, 1963–1972.
- Wood, S. N. (2011). Fast stable restricted maximum likelihood and marginal likelihood estimation of semiparametric generalized linear models. *Journal of the Royal Statistical Society, Series B: Statistical Methodology*, 73, 3–36.
- Xavier, J., Louzao, M., Thorpe, S., Ward, P., Hill, C., Roberts, D., Croxall, J. P., & Phillips, R. A. (2013). Seasonal changes in the diet and feeding behaviour of a top predator indicate a flexible response to deteriorating oceanographic conditions. *Marine Biology*, 160, 1597–1606.
- Young, J. W., Lansdell, M. J., Campbell, R. A., Cooper, S. P., Juanes, F., & Guest, M. A. (2010). Feeding ecology and niche segregation in oceanic top predators off eastern Australia. *Marine Biology*, 157, 2347–2368.
- Ziv, Y., Abramsky, Z., Kotler, B. P., & Subach, A. (1993). Interference competition and temporal and habitat partitioning in two gerbil species. *Oikos*, 66, 237–246.

BIOSKETCH

Lily K. Bentley is a movement ecologist. She is interested in how and where highly mobile predators travel, what their journeys can teach us about their evolutionary histories, and how to translate research findings into effective conservation policies.

Author contributions: Lily K. Bentley, Richard A. Phillips, and Andrea Manica conceived the ideas and designed methodology; Richard A. Phillips, Tegan Carpenter-Kling, Robert J. M. Crawford, Richard J. Cuthbert, Karine Delord, Ben J. Dilley, Azwianewi B. Makhado, Peter I. Miller, Steffen Opper, Pierre A. Pistorius, Peter G. Ryan, Stefan Schoombie, and Henri Weimerskirch collected and managed the data; Lily K. Bentley with supervision from Andrea Manica analysed the data and produced the figures; Lily K. Bentley led the writing of the manuscript with supervision from Andrea Manica and Richard A. Phillips. All authors contributed critically to the drafts and gave final approval for publication.

SUPPORTING INFORMATION

Additional supporting information can be found online in the Supporting Information section at the end of this article.

How to cite this article: Bentley, L. K., Phillips, R. A., Carpenter-Kling, T., Crawford, R. J. M., Cuthbert, R. J., Delord, K., Dilley, B. J., Makhado, A. B., Miller, P. I., Opper, S., Pistorius, P. A., Ryan, P. G., Schoombie, S., Weimerskirch, H., & Manica, A. (2024). Habitat preferences of *Phoebastria* albatrosses in sympatry and allopatry. *Journal of Biogeography*, 00, 1–13. <https://doi.org/10.1111/jbi.14966>